

REMEDY REMOTE CAMERA KIT SETUP GUIDE



Welcome to this quick start guide for setting up the Remedy kit.

The enclosed document details some of the highlights.
We are happy to do this with you online as well.

ONLINE REFERENCES:

We have an unboxing video to explain the basics of the kit,
and also how to improve your basic webcam setup.

<https://remedyeditorial.com/virtual-interview-guides/>

You can also text Scott Compton at 415-385-6351 and he'll
be happy to help you dial this in.

The screenshot shows a web browser window with the URL <https://remedyeditorial.com/virtual-interview-guides/>. The page has a dark blue background with the heading "How To Guides:". Below the heading are four content blocks arranged in a 2x2 grid. The top-left block is titled "REMEDY WEBCAM SETUP TIPS" and features a video thumbnail of a man at a desk with a laptop and a desk lamp. Below the thumbnail is a red "pdf" icon and the text "Download the PDF Guide". The top-right block is titled "Remedy Webcam Setup Tips from Remedy" and features a video thumbnail of a woman in a video call. Below the thumbnail is a play button icon, a progress bar showing 05:41, and the text "Watch the How To Video". The bottom-left block is titled "REMEDY REMOTE CAMERA KIT SETUP GUIDE" and features a video thumbnail of a laptop on a desk with a camera on a tripod. Below the thumbnail is a red "pdf" icon and the text "Download the PDF Guide". The bottom-right block is titled "Remedy Remote Camera Kit Setup Guide from Remedy" and features a video thumbnail of a hand holding a Sony camera. Below the thumbnail is a play button icon, a progress bar showing 18:16, and the text "Watch the How To video". At the bottom of the browser window, the address bar shows the full URL: https://remedyeditorial.com/wp-content/uploads/2020/05/Remedy_Webcam_Intv_Tips_v9_sm.pdf.

SAMPLE LOCATION

A naturally lit space with **indirect** lighting. Our LED Light just provides a little fill. Some depth to the shot helps make it interesting. The camera will send the background out of focus. Fine a spot that looks great at the same time we'll be interviewing.



Depth and some visual interest in the background.
Note - even though this shot has small windows in the back, try to avoid large windows in the background.

The camera & lens are configured to shoot “shallow depth of field” so notice how the background is soft and the focus is on the subject.

SAMPLE FRAMING

Camera should be eye level. Centered yourself and chest up.



SAMPLE SETUPS

A few snapshots from other subjects for reference. Essentially, set up the tripod and camera at eye - level. Then use some books to lift your laptop just under the lens. This way your conversation is natural.



What's in the Kit

Lav Mic.

This is a clip on microphone and recorder.

AJA U-Tap. Plug the HDMI cable from the camera into this unit, and then it converts the video signal via USB to your computer.

Capture Video Cables.

These connect the camera video to the AJA U-TAP unit, and the U-TAP to your laptop for the video call.

Shotgun mic.

Depending upon which mic you receive, this will mount on top or on the side via the "hot shoe"

LED Light.

This LED light should be set to 5600k and 50% power. It mounts to the second tripod.

Filters

Keep in kit. Only use if asked by us.

3 Lenses.

Start by mounting the 24mm.

SONY a6400 camera.

Mount the camera to a tripod, connect the 24mm lens, put a battery in the bottom and connect the AC, Video and mic cables and you're good to go!



Camera Power.

You'll find an AC cable / USB Charger and 2x batteries in this pouch. Put one battery in the bottom of camera and connect the copper power cable to the camera.

Two Tripods.

Use one for the camera and one for the LED Light.

The tripod are folded for storage. To open, unfold and flip the legs over the center post.



You can flip the back monitor screen up and over so that you can see it from the front. This allows you to stay centered in the frame and confirm your recording.

CONNECT THE CAMERA

Battery & AC Power Install

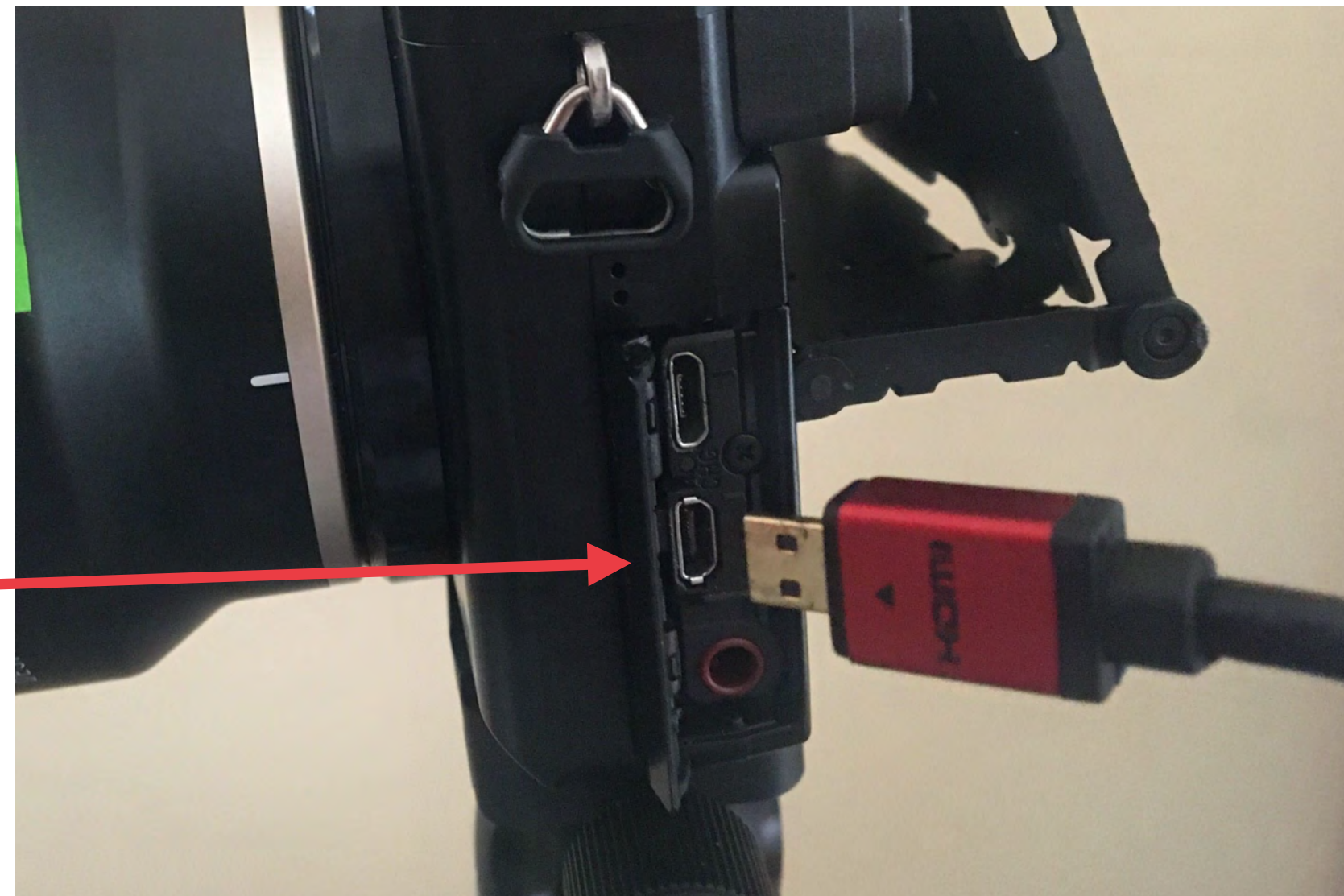
1. Insert a battery in bottom of camera taking note of the pins in the battery compartment
2. We've already installed an SD card in the card slot inside the battery compartment
3. Open the left side door of the camera. You'll see 2 small ports
4. The Top port is the USB power in. Insert the USB MICRO CABLE into this port and attach to the AC plug



CONNECT THE CAMERA

HDMI Video Cable Install

1. Locate the CAMERA CAPTURE bag containing 3 cables, and use the HDMI Micro to HDMI cable.
2. Locate the video port on the camera. It is the lower of the two ports underneath the Power port.
3. Plug the Micro HDMI end to the camera video port.
4. Insert the larger end of the HDMI CABLE into the lower port and attach to the HDMI IN on the Capture Device



CONNECT THE CAMERA

Converter Install

Locate the USB 3 to USB-B cable and attach it to the USB port on the converter.



Insert the USB 3 (or USB-C adapter) into your laptop USB port.



We use an HDMI converter to send video out of the camera and into your computer for your web interview session.



From Camera, plug the large HDMI connector into HDMI IN.



CONNECT THE CAMERA

Shotgun Mic Installation

1. Locate the microphone with the grey fuzzy windscreen
2. Locate the **red plastic suspension mount** and attach it to the mic by snapping over the barrel of the microphone.
3. **Attach the mic to the mount on the side of the camera.** The suspension mount slips on and tightens down.
4. Attach the **red audio cable** to the back of the microphone and then into the red jack on the side of the camera.



CONNECT THE CAMERA

When you've connected all your cables to the camera, it will look like this:



Top slot is for the AC connection. FLAT SIDE TOWARD FRONT OF CAMERA.

2nd slot is for the HDMI Micro. FLAT SIDE TOWARD FRONT OF CAMERA.

Bottom is for the Microphone Jack if you have a side mounted Rode Videomicro.

CAMERA SETUP Final Steps

1. Remove lens cap
2. Power camera ON
3. Make sure top dial on camera is set to the MOVIE setting
4. Remote Interview Setup Complete!

At this point your camera should be available to your computer automatically.

No other settings should be adjusted on camera

START / STOP recording



LED Light Setup

Once you have your camera setup in a well-lit location, then determine if you're face needs a little fill light

1. Attach the included LED light to the second tripod
2. Dial the color temperature to 5600K
3. Attach the LED power supply to the power port on the back of the LED light
4. Position the light just off to the side at the "10 o'clock" or "2 o'clock" position. If you wear glasses we will adjust it during our prep meeting to minimize reflections.



Camera Setup

Using Tascam Lav Mic/Recorder

This mic/recorder attaches to your shirt mid chest area. It has a battery installed and is ready to go.



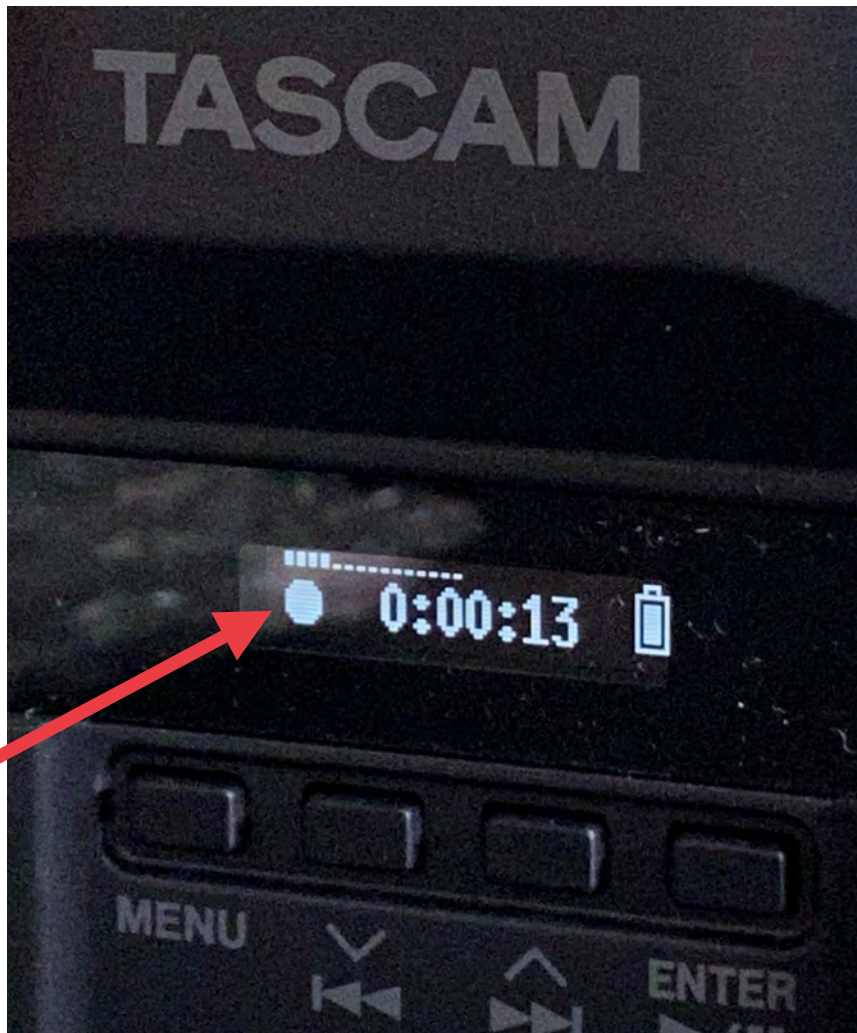
1. Screw in the mic cable.



2. TURN ON:
Use your fingernail to pull DOWN the slider and hold for 3 seconds until the display comes on.



3. START RECORDING:
Use your fingernail to pull UP the slider and hold for 3 seconds until the display shows a CIRCLE.

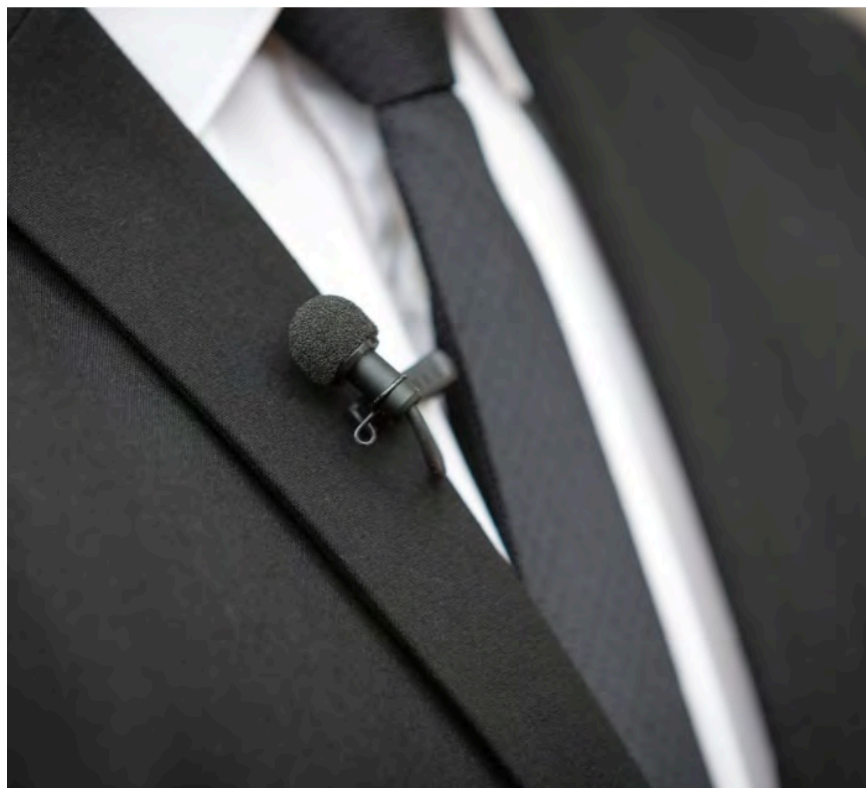
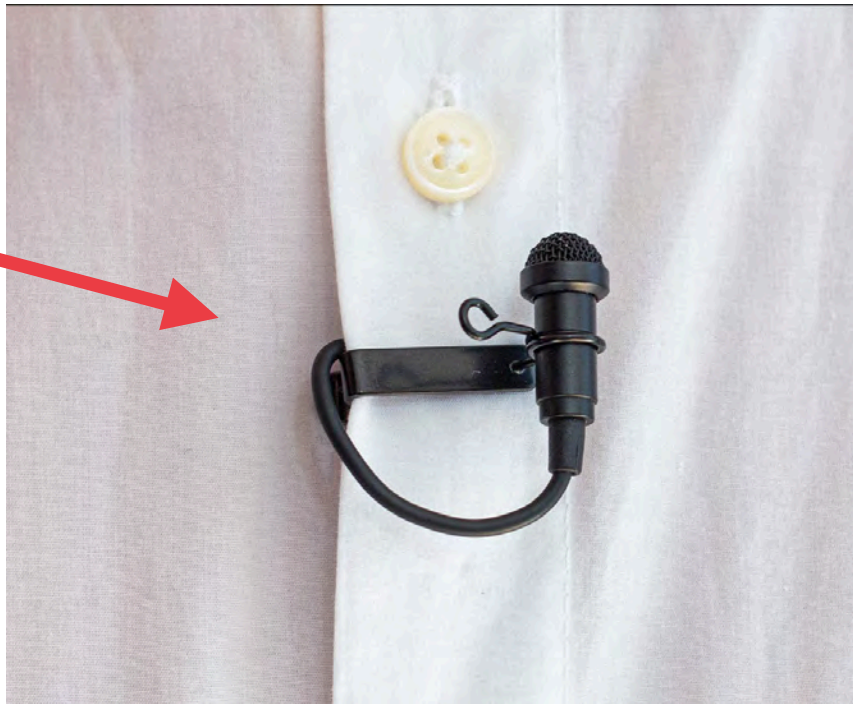


4. STOP RECORDING:
Use your fingernail to pull UP the slider and hold for 3 seconds until the display shows a SQUARE.



5. TURN OFF UNIT:
Repeat STEP 2

Attach the mic between the 2nd and 3rd button on the shirt, and run the cable down and out the bottom of your shirt so it is hidden from the camera.



Camera Setup

Backup SOUND w smart phone

We want to use your smart phone as a backup sound recorder.

Download the following simple application to your phone.

- iPhone - Voice Memos.
- Android - Voice Recorder



Press the large red button on the app, and speak and confirm you see a waveform building and the clock moving.

Place your phone in Airplane & DND mode.



Place your phone on the edge of your laptop directly in front of you. We want it off the table top. Bottom of your phone should face you.

FLIP DISPLAY TO FACE FRONT



You can flip the back monitor screen up and over so that you can see it from the front. This allows you to stay centered in the frame and confirm your recording.

Depending upon which microphone you have, it will look accordingly.



REMEDY

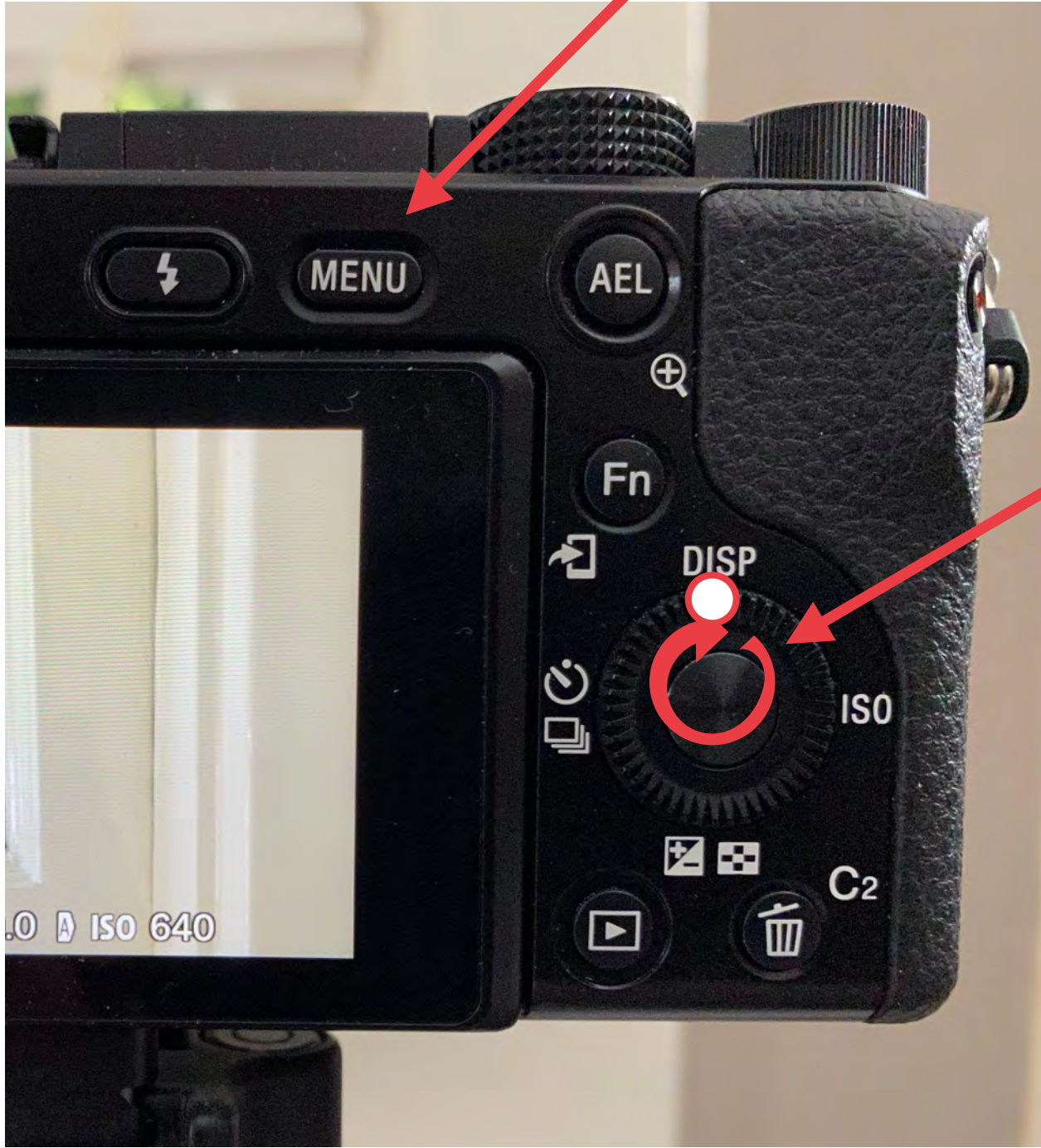
CAMERA CONTROL BUTTONS (only if asked)

During our session, we may ask you to make a few adjustments to the settings.

Rotate this dial to adjust the aperture (f-stop) of the camera.



Press the MENU Button to access settings.



This is a multi-function dial.

ROTATE the wheel to change the shutter speed.

PRESS up/down/left/right/center to navigate the menu.

TURN OFF SETTINGS INFO

We may ask you to turn off HDMI info settings. If you want to use the Remedy kit for a live webcast, you'll first want to turn OFF the on-screen HDMI Info Display.

If you have an HDMI cable attached to camera, remove it to activate rear screen.

- Step 1: Press Menu
- Step 2: Navigate to STAR menu
- Step 3: Select HDMI Settings

Step 4: Select HDMI Info Display

Step 5: Select OFF



Remedy Core Team

Mary Samson - Account Director
Chris Valente - Executive Producer
Scott Compton - Creative Director
Laura Marks - Producer
Mike Lowe - Art Director / Director
Aubrey Wynn - Director / Editor
Joel White - Senior Editor
Ben Smith - Lead Motion Designer
Brittany Uno - Production Manager
Kyle Chater - Staff Designer
Sarah McDonald - Controller

Social Media: @Remedyeditorial

